



FAST RESPONSE AND HIGH PERFORMANCE

The patented electronic control system.

DIA-LOG is a highly **flexible electronic control system** that enables the customer to maximise all the advantages of the Stabilis Electra and Waveless stabilizers system. The user has complete control of the Stabilis Electra system through the **touch screen interface** (and the backup control panel) located in the **wheelhouse**.

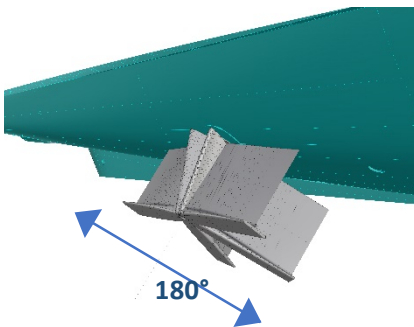
ADAPTIVE



The system monitors the weather conditions and predicts the vessel's motion, adjusting the operating parameters automatically to ensure maximum comfort

Available when operating in Underway mode only.

FLIP ^{New}



FLIP allows the Stabilis Electra fins to rotate 180° while at anchor.

This reduces "anchor creep" and helps to maintain tension on the anchor chain and to keep the bow pointing into the wind.

The actual "flip" angle can be adjusted at commissioning time to account for hull shape and prevent interference with the chine.

Available when operating in At-Anchor mode only.

ECO

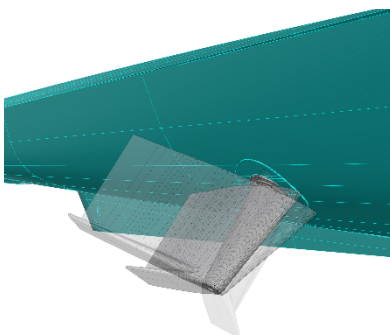


Reduced power absorption to approximately 60% of the norm by limiting the system's responsiveness.

ECO is useful for limiting the power demand on the generators.

Available when operating in At-Anchor mode only and will cause a slight decrease of roll-reduction performance.

DOCK



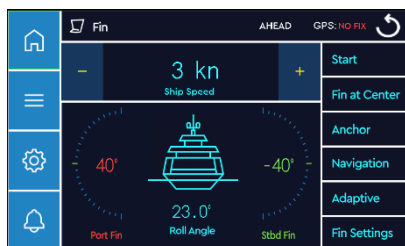
Limits the maximum fin rotation angle.

This is useful when moored alongside the dock or next to another yacht and you want to use the stabilizers.

The maximum rotation angle while in DOCK MODE is defaulted to 25° but can be adjusted during commission at any value between 20° and 30°.

Available when operating in At-Anchor mode only and will cause a slight decrease of roll-reduction performance.

MSS



Operate stabilizers in At-Anchor mode while throttle is engaged at low speed.

Without this option, fins are moved to the "Fins-At-Center" position as the throttle is engaged.

MSS can be useful to maintain stabilization active when trawling at low speed or approaching your berth in a swell.

MSS is necessary for yachts equipped with Dynamic Positioning (DP) systems.

Available when operating in At-Anchor mode only.