

Newspaper metadata:

Source: Nautech News

Country: Italy

Media: Periodics

Author: Silvia

Montagna

Date: 2019/11/01

Pages: 70 - 71

Media Evaluation:

Readership: 30.000

Ave € 5.652,5

Pages Occuped 1.75



PRODUCTS

Silvia Montagna

Waveless STAB: the ultracompact

Formed in 2005, CMC Marine has over the years become the leader in yachting for its fins stabilisation systems with electric actuators. Waveless STABs the latest new product specifically for smaller yachts.



The CMC Marine headquarters in Cascina (PI), Italy.

CMC Marine takes another step forward in boat stabilisation systems. After having become undisputed leader in the stabilisation of vessels from 20 m with the by now well-known Stabilis Electra, the Cascina company took to the Cannes Yachting Festival 2019 Waveless STAB, the new family of ultracompact electric stabilisers designed specifically for boats from 12 m. Says Pietro Cappiello, CMC Marine Strategy Manager, who followed closely the study and development of the project: "The success and satisfaction that the Stabilis Electra has brought us over the years in all its versions – CMC Marine has installed more than 1000 systems on boats from 20 m up, 700 of them traditional stabilisers in the past 10 years, 150 just in the past 12 months – lead us not to stop there but to concentrate and bring all our know-how to the less than 20 m sector where there were no electric fin stabilising systems and only gyroscopes were used. "Everything that led us to insist on stabilising fins in the larger yacht market has been transferred to this product, covering a segment that had not yet been explored. We decided to create an electric stabilising system with fins – it's in the CMC Marine DNA – that was compact so it could be installed without problems of bulk and space, that was quiet, to give excellent comfort on-board and offered CMC Marine technology, which is known to be reliable, with excellent performance. And also with low consumption so it could be used without the need for an excessively large generator. These were the drivers behind the design of this new product."



The STAB Waveless series currently has four models of electric stabilisers: STAB 25 (for boats from 12 to 17m), STAB 30 (from 17 to 32), STAB 40 (22 to 30m) and STAB 50 (from 30 to 40m).

The strong points of Waveless in brief

First of all compactness. The STAB 25 is less than 24 cm high and 28 in diameter, the height of a small bottle of water and the width of an outstretched hand, for example.

The power of the motor. Since it's used on small boats with smaller fins, the power of the motor is necessarily lower and obviously it consumes less top for the smaller STABs, the 25 and 30, the maximum power needed for the motor is respectively 2kW and 3 kW.

Another innovation is in the fins, which is smaller and have a flange to make them easy to join to the flange on the mechanism.

They work both under way and at anchor, and unlike gyroscopes they can be switched on and off immediately.

It's a very quiet system, less than 50 dB. Once installed with the right protection it can be switched on even at night without disturbing the owner's sleep, so he can even install it under his cabin.

Newspaper metadata:

Source: Nautech News
Country: Italy
Media: Periodics

Author: Silvia
Montagna
Date: 2019/11/01
Pages: 70 - 71

Media Evaluation:

Readership: 30.000
Ave € 5.652,5
Pages Occupied 1.75

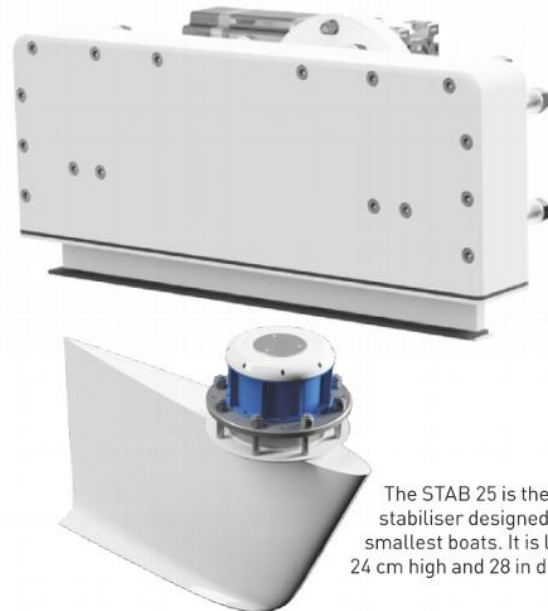


Waveless STAB

The new family of stabilisers is called STAB and was launched under the Waveless brand. At the moment there are four models – STAB 25 (for boats from 12 to 17m), STAB 30 (from 17 to 32), STAB 40 (22 to 30m) and STAB 50 (from 30 to 40m) – and four models of intruder TRIM. “Unlike Stabilis Electra,” says Cappiello, “Waveless is more for a consumer market. We know there is a lot of difference between the end-users of boats of more than 30 m, where you need a very technical approach to sales, because in the segment of yachts up to 20 m stabilisers are generally an option and often the owner makes the final decision. “To succeed in producing the STAB Waveless series we first of all interfaced with our current suppliers and used, as for Stabilis Electra, components from industrial electronics. They are all products used to build robots for production, to build machines for assembly lines. In recent years the evolution in robotics and industrial plant has moved towards increasingly compact and efficient products, we involved our suppliers in the development of the new product, to help us with their know-how.”

What makes up the system

“The system is very simple, it’s made up of a small inertial platform with accelerometers that read all the movements of the boat – roll, pitch, heel... – and transmit them, along with the boat the speed, to the control system which in turn tells to the two fins how much they must rotate and at what speed. This two fins are on opposite sides of the boat, more or less amidships, and with their movement, if the boat is underway they generate a force on the hull that works more



There are four models of the Waveless intruder trim.

The STAB 25 is the electric stabiliser designed for the smallest boats. It is less than 24 cm high and 28 in diameter.

or less like a flap, while with the boat at anchor they move faster and generate a force that contrasts the roll of the boat and stabilises it. “For the fins we have two different sizes for each actuator model, we have tried to keep everything very simple. As CMC Marine we have a really wide choice of fins. With Stabilis Electra we’re used to offering the most ideal solution possible. When there are particular requirements, we make fins with particular dimensions. But with the Waveless brand we wanted to offer a simple product, easy to understand, assemble and use for the customer.”