

**Newspaper metadata:**

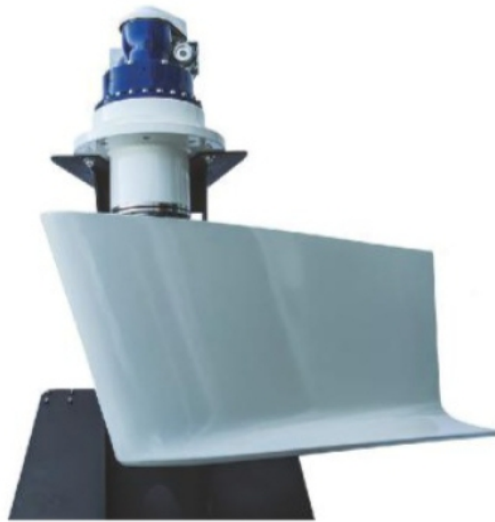
Source: Motor Boat & Yachting Author:  
- UK Date: 2019/11/01  
Country: UK Pages: 93 - 93  
Media: Periodics

**Media Evaluation:**

Readership: 60.000  
Ave € 875  
Pages Occupied 0.25



Web source:



### CMC MARINE WAVELESS

Thirty years ago bow thrusters were the preserve of 50ft+ boats, but today they are commonplace on anything from 25ft and up. Now stabilisers are making the same plunge to the smaller boat market as technology improves and demand increases. The latest models from **CMC** are a case in point - its new Waveless system is designed for boats as small as 12m (39ft). It's made possible by using electric actuation rather than hydraulic, which significantly reduces the amount of space needed inside the boat. In the case of the smallest of the four-strong new Waveless series, that's just 38cm in diameter and 22cm in height. Suitable for planing or displacement boats, zero-speed operation means that these will work at anchor, and the smallest models can be run from the boat's 24-volt system rather than requiring a 220V source.

**PRICE** £TBC **CONTACT** [www.cmcmarine.com](http://www.cmcmarine.com)