

# ZERO WAVES

Feel the comfort, zero roll motion  
on your yacht.  
Thanks to **Stabilis Electra**.  
Easy, Efficient, Electric.



**CMC**  
**MARINE**  
reinventing innovation



**CMC MARINE SRL**

Via Francia, 16  
56021 - Cascina (Pisa) ITALY

Phone +39 050 815500

Fax. +39 050 710536

Amministrazione: + 39 050 815550

Back Office: +39 050 815520

Commerciale: +39 050 815530

Produzione – Service & Refit: +39 050 815560

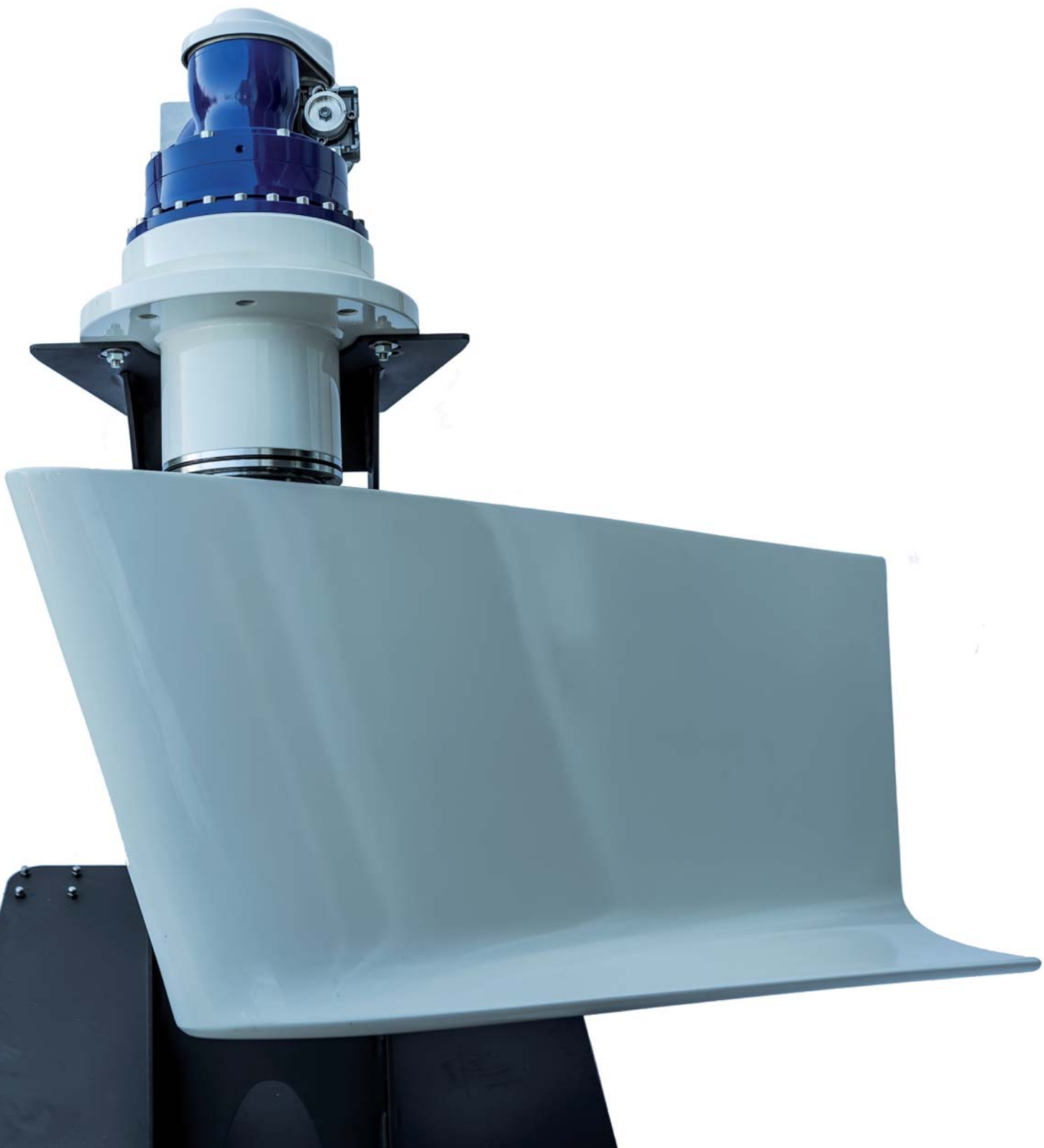
Ufficio Acquisti: +39 050 815553

Ufficio Tecnico: +39 050 815540

[info@cmcmarine.com](mailto:info@cmcmarine.com)

[www.cmcmarine.com](http://www.cmcmarine.com)

# STABILIS ELECTRA

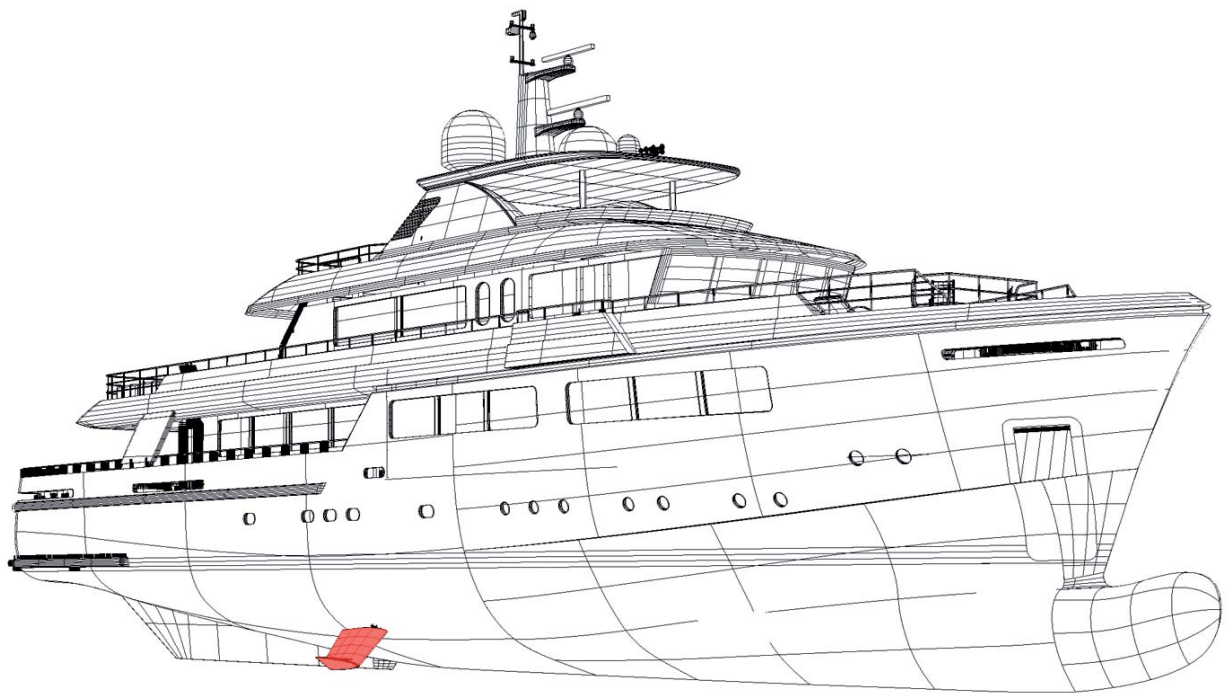


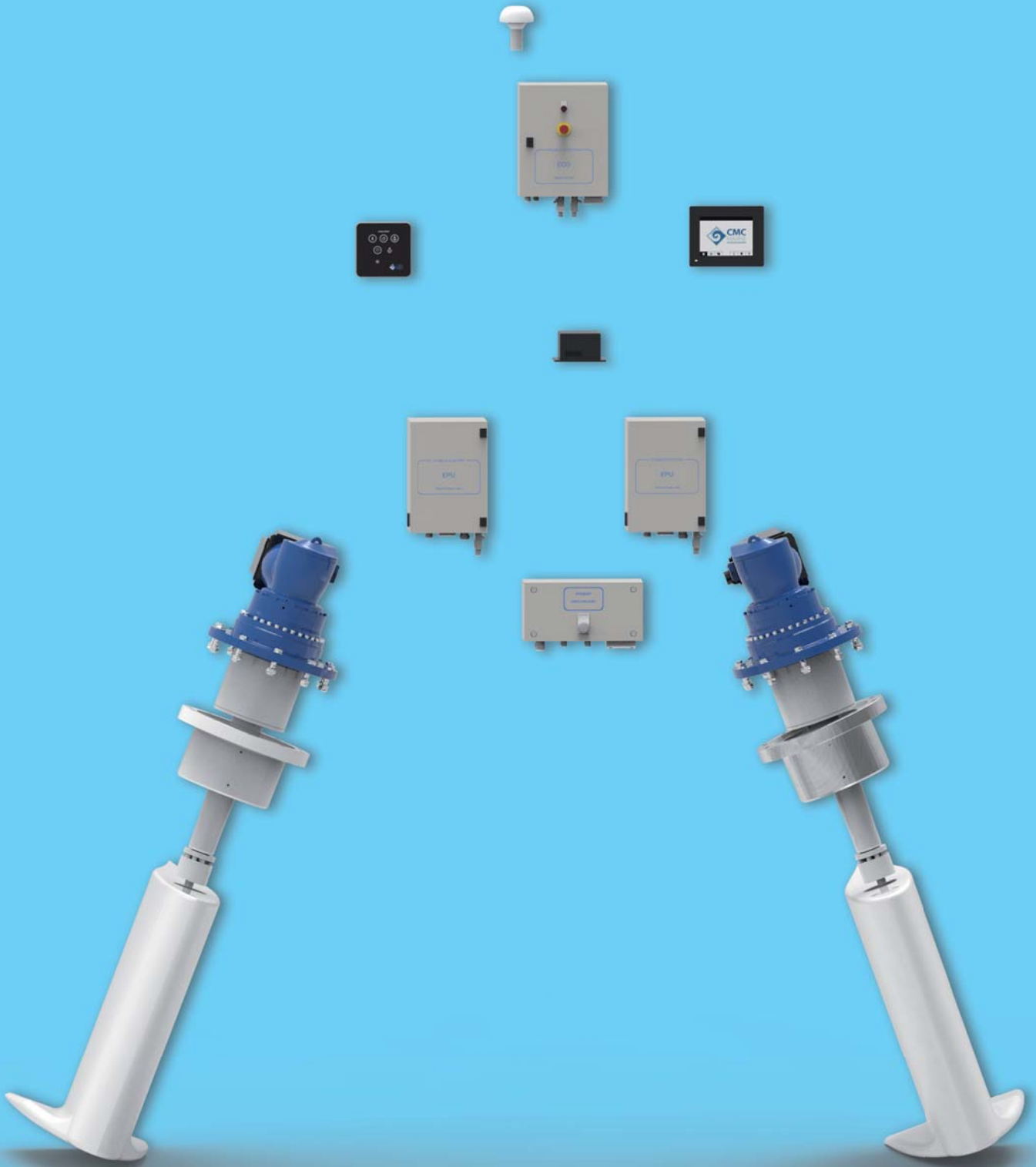
## STABILIS ELECTRA: ELECTRIC IS THE ANSWER.

Stabilis Electra, covered by EU patent n.2172394 and launched on the market by **CMC Marine** in 2008, is the first electrical stabilization system in the world. In the following years, Stabilis Electra has been furtherly developed and improved, reaching the highest quality standards which characterize this unique and innovative stabilization system.

In the new yachts generation market, the demand for an efficient stabilization at anchor is no longer an

optional but it is becoming more and more a must-have. Therefore, to be efficient, the stabilizers system must react faster than the induced roll, as well as the forces generated by the fin movements have to be well phased with the ship roll angles. The idea behind the use of an electrical drive comes from the aim to offer a system with a higher dynamic and a more accurate response, in order to satisfy the new market's needs. And CMC Marine has always succeeded in this purpose.





## WHY CHOOSE STABILIS ELECTRA?

- Maximum comfort at Anchor Mode
- Very low noise (40 dB)
- No maintenance
- Minimum power absorption
- Reduced dimensions and spaces optimization
- Easy installation
- High reliability
- High Control on the system performances
- No hydraulics

**Stabilis Electra** is the top-quality product for yachts from 60 feet that has led **CMC Marine** to be the leader company in Italy, and that is leading it also to spread more and more in the foreign market.

Sanlorenzo, Azimut-Benetti, Overmarine, Cantiere delle Marche are only some of the major shipyards, which have chosen to have the excellence of CMC Marine's stabilizers on board.

Thanks to its unique features, **Stabilis Electra** is the perfect solution for every yacht.



## CMC MARINE INTEGRATED SYSTEM

**CMC Marine** gives also the possibility to integrate the **Stabilis Electra** with other CMC Marine systems, such as the electric bow/stern thrusters, using an unique control device both for fins and thruster control systems.



## PRODUCT RANGE

	YACHT SIZE	POWER RANGE	STANDARD FIN SIZE sqm.
<b>SE 40</b>	20 m/25 m	2,0 Kw/3,5 Kw	0,60 - 1,00
<b>SE 60</b>	23 m/35 m	3,5 Kw/5,0 Kw	1,00 - 1,40
<b>SE 80</b>	30 m/40 m	5,0 Kw/7,0 Kw	1,60 - 1,85
<b>SE 120</b>	45 m/54 m	9,0 Kw	1,85 - 2,50
<b>SE 160</b>	>55 m	11,0 Kw/15,0 Kw	3,00 - 3,60
<b>SE 200</b>	>55 m	23 Kw	4,00 - 4,60

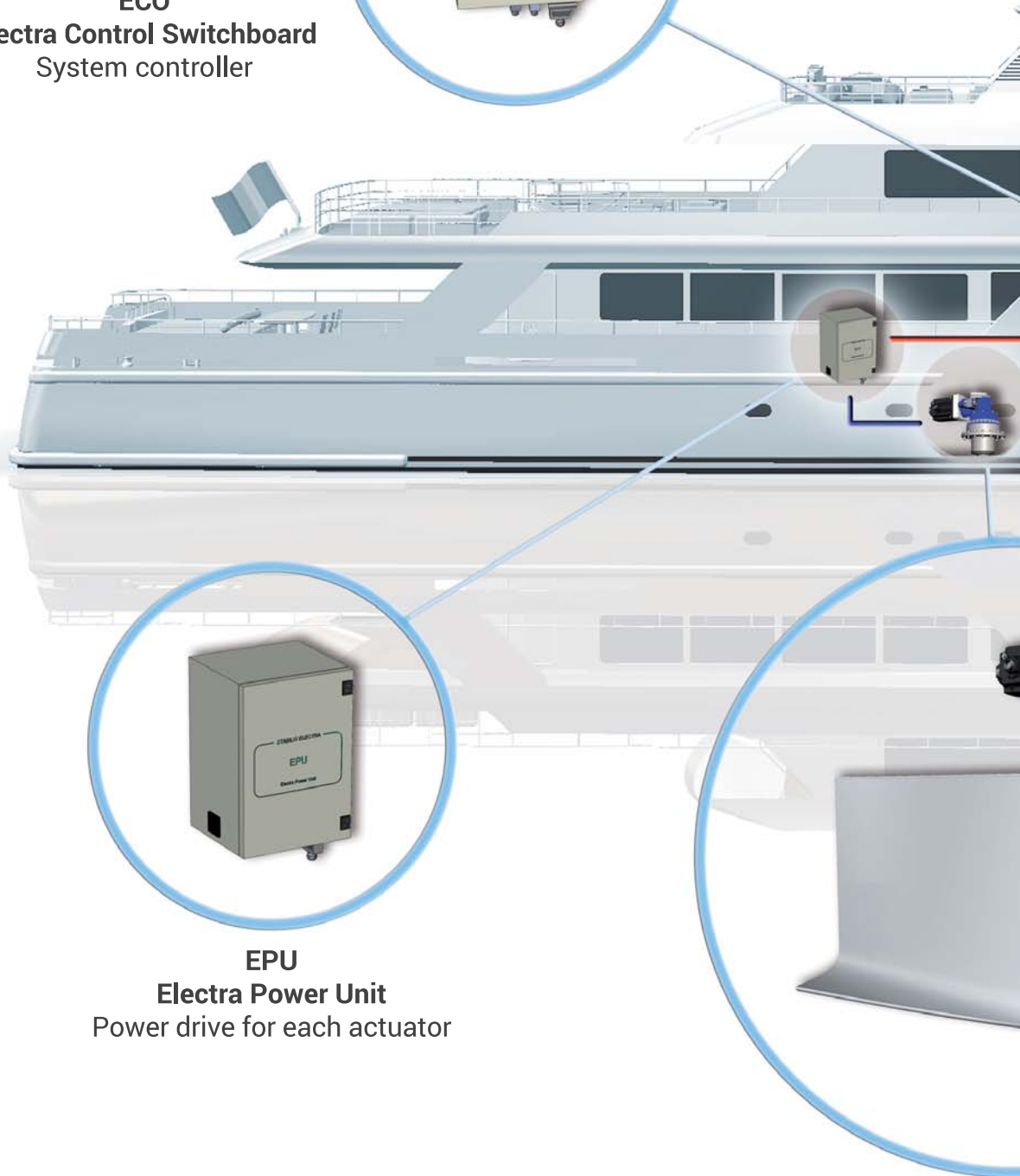


## ONBOARD LAYOUT

**ECO**  
**Electra Control Switchboard**  
System controller



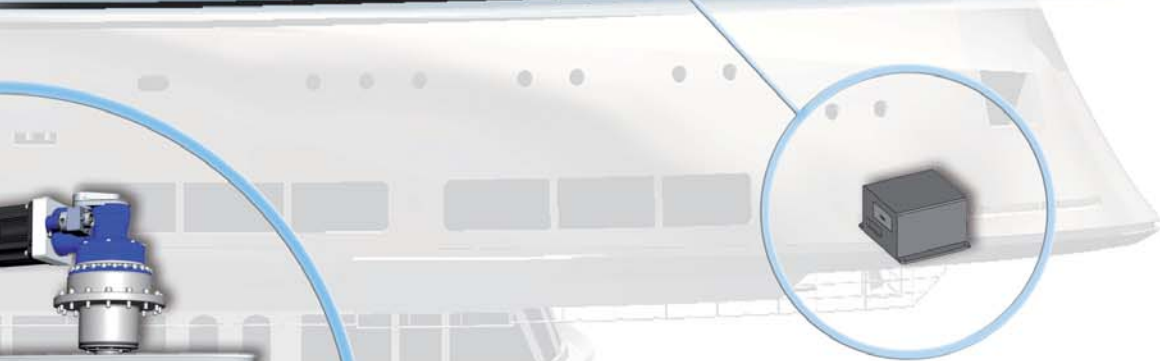
**EPU**  
**Electra Power Unit**  
Power drive for each actuator







**DIA-LOG**  
Smart user  
interface touchscreen



**ROLL MOTION SENSORS**

**STABILIS ELECTRA**  
Actuator and Fin Blade



# APPLICATIONS

## APPLICATIONS



## DIALOG ELECTRIC CONTROL SYSTEM.

**DIALOG** is a very flexible electronic control system that enables the customer to take all the advantages of the Stabilis Electra stabilizers system. It is a full digital electronic controller designed with an accurate numerical process developed by **CMC Marine** together with the Naval Institute of Naples University. The reliability of the CMC algorithms based on the inputs/outputs signal guarantees the best possible seaworthiness behaviour of the ship.

### MAXIMUM FLEXIBILITY, MAXIMUM ADAPTABILITY

The user has the complete control of



the Stabilis Electra system through the touch screen interface (and the backup control panel) located in wheelhouse.

Using the touchscreen, the user can totally exploit the power of the electronic regulator ts adaptability. In fact, it can control the system choosing between two different function modes:

- User mode: the operator can set and adjust the regulator parameters.
- Adaptive mode: the fins are controlled according to the sea waves conditions, the roll signals and also the encountering ship/waves frequencies and heading. In the adaptive mode the system works automatically without the operator interface.

One of the most powerful function is the autotest page, where the system gives the user a feedback on the behaviour of the system and allows CMC Marine technicians to remotely check the good functioning of the system and, eventually, to solve possible problems.



# OUR HISTORY

CMC Marine was founded in 2005 with the aim to offer a new generation of meticulously designed control and stabilizing systems. From the beginning, the Company has invested considerably in R&D, in collaboration with the best Italian universities, shipyards' technical departments and partner companies. Though the year, CMC Marine was thus able to develop several new and innovative products: in 2008 Stabilis Electra, the world first stabilizing system with an electrical actuator, was launched on the market, obtaining the European Patent n° 2172394 in 2013. In the following years, the Company patented also the new control software Dia-Log, while it kept on launching on the market new

high-tech products, such as the SE Integrated System. Being innovation the core value of CMC Marine, many other novelties in the near future will certainly be presented.

CMC Marine's headquarters, manufacturing and engineering facilities are located in Pisa (Tuscany), while abroad you can rely on the International Service Network, with several assistance centers distributed in strategic locations. Today the Company's products have already been chosen by the most important Italian and International shipyards, who want to rely on the quality, innovation and reliability offered by CMC Marine.

## KEY PARTNERS

Exclusive international partnership with **Mitsubishi**, **Danfoss** and **Wittenstein**: a strong enhancement for **CMC Marine**. Such collaboration are a guarantee for the high component's quality, as well as a incentive for a continuous products development, not to mention the constant and immediate technical support the three partners can provide.



## AWARDS

CMC Marine has been awarded in 2011 with the most prestigious prize given in the marine industry: the DAME in the frame of the Mets, the Marine trade show held yearly in Amsterdam.

CMC Marine was the Category Winner in the Machinery, propulsion, mechanical and electrical systems and fittings category.

CMC Marine has also been awarded in

2009 with the **Qualitec Technology Award** at the Seatec Trade Show, the International Exhibition of technologies and subcontractors for boat and ship builders.

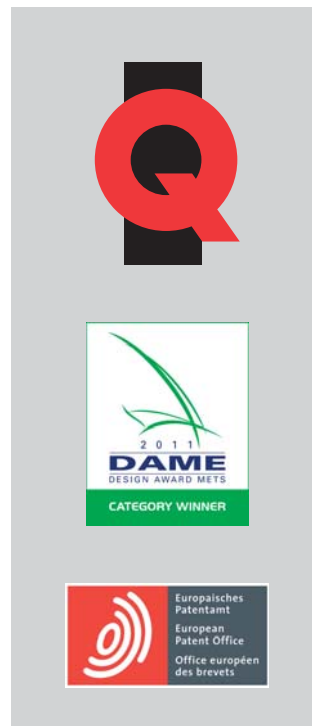
**The Qualitec Technology Award** is the prize created to reward technological innovations presented by Seatec exhibitors.

## R&D DEPARTMENT

The **R&D Department** is the lifeblood of the company, where innovation and continuous research are the central points of CMC Marine's philosophy.

Brilliant people, whose ideas are always a step forward, compose the R&D Department team: all its members come from the most eminent Universities of Italy.

A continuous melting pot of new ideas, projects, technical developments are the core activity of our team, always pursuing CMC Marine's main purpose: reinventing the innovation.



# CUSTOMER CARE

## Remote assistance

The new Dia-Log system (patent p.n° T02012A000472), enhanced with a more advanced algorithm and increased memory capabilities, allows the crew to run a check on the system actual performances and to effectuate a direct and immediate diagnosis. Plus a GPRS transmission system is able to provide CMC Marine Technicians data in real time and remotely: the onboard assistance can surely be more prompt and precise when the malfunction has already been detected.

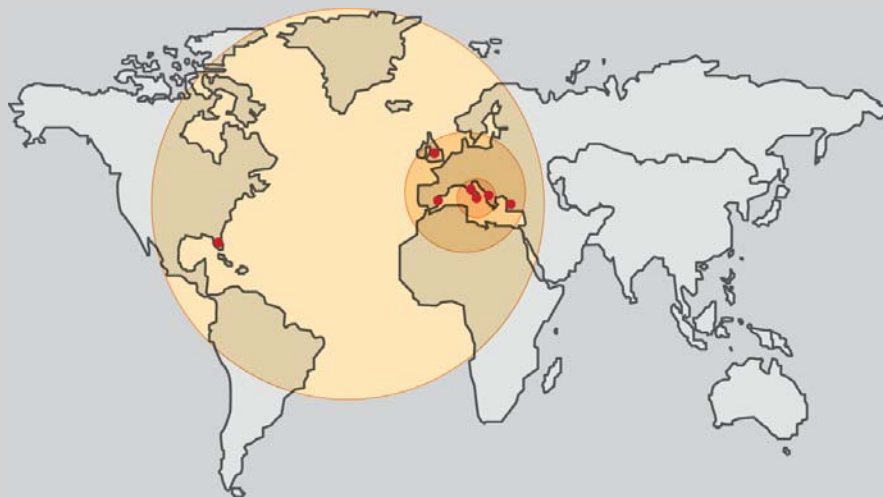
## Customer service

With the aim to ensure a fully exploitation of the system's potential, the Customer Care department is constantly working in close contact with the clients through all the yacht's construction phases, looking for new and alternative solutions on how to integrate CMC Marine's products with the entire vessel project.

To foster its product on international markets CMC Marine is promoting and implementing a Service & Customer Care net, operating on a worldwide scale.

Currently the service net is composed by technicians, all of them trained internally, operating in the Mediterranean, in the most attended yachting area, UK and USA; so to guarantee an immediate and complete response.

 <b>Island Marine Electric</b>	 <b>Almi</b> UMAGO - UMAGO	 <b>ETY</b> SUPERYACHT ELECTRICAL SERVICES	 <b>Marine &amp; Industrial Transmissions Ltd</b>	 <b>BTS MARIN</b> BTS Marine Development San. Tic. Ltd. Srl
<b>USA &amp; CARIBBEAN</b> Florida - Ft. Lauderdale <a href="http://www.islandmarineelectric.com">www.islandmarineelectric.com</a>	<b>CROATIA &amp; ADRIATIC SEA</b> Umago - Croatia <a href="http://www.almi.hr">www.almi.hr</a>	<b>SPAIN &amp; MEDITERRANEAN</b> Palma de Mallorca - Spain <a href="http://www.etyyachting.com">www.etyyachting.com</a>	<b>UK - NORTH EUROPE</b> Queenborough - UK <a href="http://www.mitgroup.co.uk">www.mitgroup.co.uk</a>	<b>TURKEY &amp; ME</b> Istanbul - Turkey <a href="http://www.btsmarin.com.tr">www.btsmarin.com.tr</a>



## CHOSEN BY

AZIMUT  
YACHTS

  
BAGLIETTO  
1854

*Benetti*

  
CANTIERE DELLE MARCHE

*cantieri di pisa*

  
CODECASA  
SHIPYARDS SINCE 1825 

MOONEN  
YACHTS

  
NUOVI CANTIERI APUANIA

  
OVERMARINE  
GROUP

**SANLORENZO**

  
Sunseeker®

TANSU

*..and many more!*



CMC MARINE SRL

[www.cmcmarine.com](http://www.cmcmarine.com)