

# synfo.com

hosted by



the complete superyacht news and information source

we

Search: 

## Equipment News

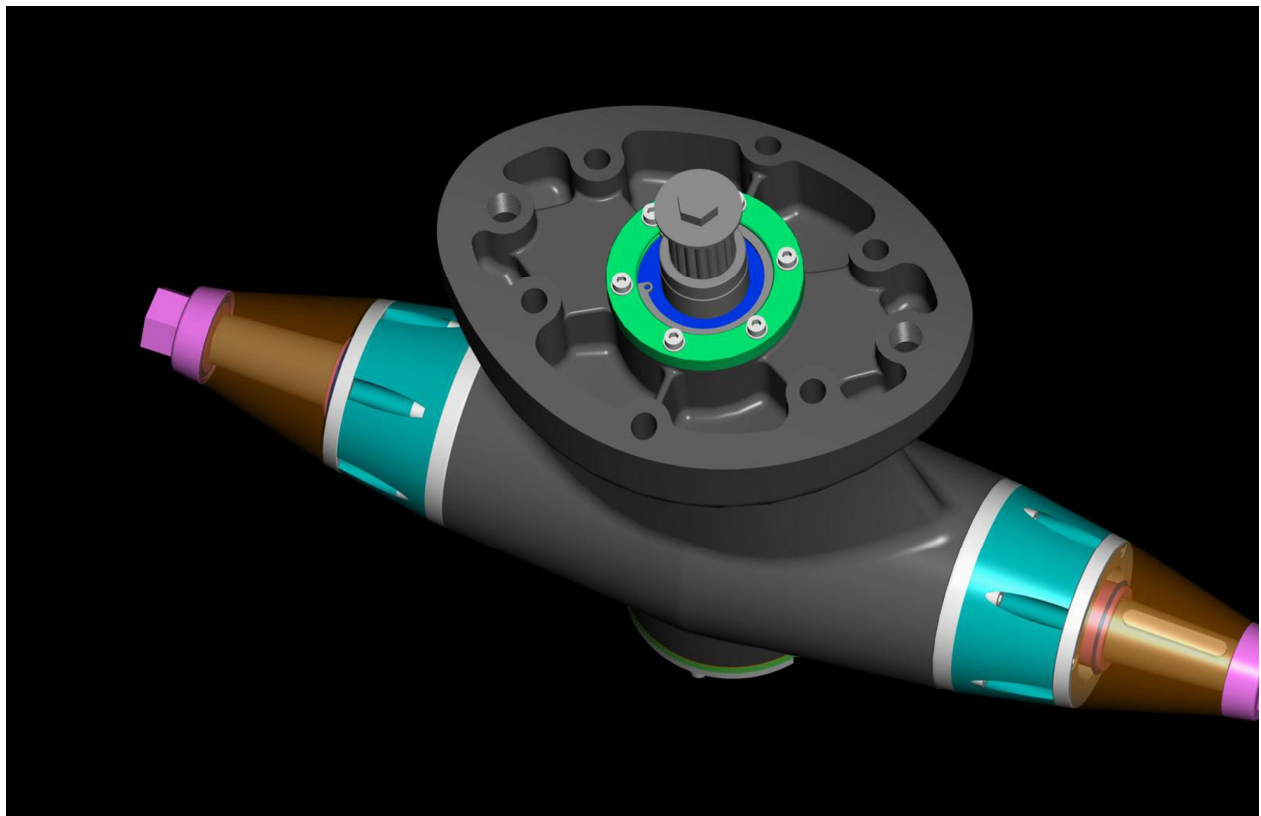
---

### 16 February 2011 - CMC Marine's new range of electric and hydraulic thrusters

CMC Marine presented four new thrusters at Seatec 2011: Dualis BTM 20, Dualis BTM 30, Dualis BTM 40 and Dualis they are replacing the 2009 models with the added feature of a range of units with different power – the lower power is kW and the higher is now 45 kW rather than 37 kW.

Special pod mounting blocks allows the thrusters to be coupled with both hydraulic and electric motors and the pod minimise hydrodynamic resistance and reduces the external surface.

The new series maintain the previous model's features of tapered roller bearings, triple seals on the propeller shaft, nickel chromo treated bushings.



The new Dualis Thruster

WM