

SUPERYACHT

BUSINESS

Industry insight for decision makers

New Zealand

Despite an increasingly strong currency, Kiwi yards are staying fully competitive. Full report

Contractors

Find out why Vitters chose British and Dutch firms to complete its 42m carbon sailing yacht *Sarissa*

Jongert Shipyard

New ownership means a switch to fast motoryachts



Lamberto Tacoli

CRN's chairman reveals the business plans he's putting in place to stay ahead of the competition



Time for Tunisia

How the Arab Spring helped infrastructure investment

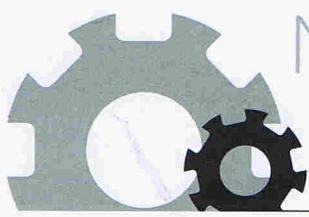
Florida refit

Full round up of the best yards in the Sunshine State

Show organisers

The challenges of putting on the industry's big set-pieces

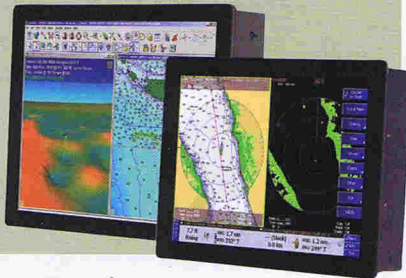




DUAL TOUCH BRIDGE DISPLAY

► **Producer:** Kep Marine
► **Web address:** www.kepmarine.com

The first marine multi-touch monitors are now available from KEP Marine. Screens on the KEPM GB Dual Touch Glass Bridge Display series are similar to smart phone and computer tablets in their ability to allow boaters to zoom in and out and skew displayed images. The display offers 2D and 3D top-down and side viewing, and clear, crisp, no haze or glare screen clarity in all lighting conditions. They can be mounted side by side for a glass bridge appearance.



LIGHT-WEIGHT BECKET BLOCK

► **Producer:** Equiplite
► **Web address:** www.equiplite.eu

Reducing weight above deck will always help performance and the Equiplite VHi Load Runner Becket TURBO Roller Bearing Blocks can play a useful part. Designed specifically for high performance yachts, they have a certified quick loop for superyachts, which takes the load directly through the centre of the sheave, resulting in less friction, higher efficiency, and making it easy to connect and disconnect.

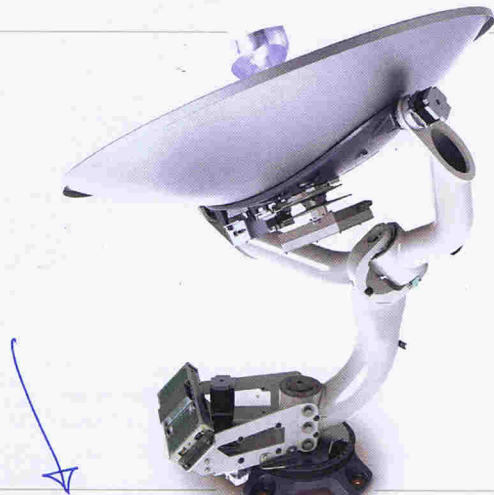
Wide rollers allow increased radial loads, and the larger balls take radial and side loads. With dry operation, Teflon inserts lubricate during use, reducing friction in balls and rollers.



GLOBAL SATELLITE HDTV SYSTEM

► **Producer:** KVH Industries
► **Web address:** www.kvh.com

The world's first global satellite HDTV system, the TracVision HD11 from KVH, includes a four-axis stabilized design capable of tracking satellites close to the horizon, as well as directly overhead. It is also the first marine satellite TV system to offer a digitally programmable Universal World LNB, which is compatible with all direct-to-home satellite TV services and HDTV programming, along with a library of more than 100 available satellites.



ENERGY SAVING INSTRUMENT DISPLAY

► **Producer:** Raymarine
► **Web address:** www.raymarine.com

With a highly intuitive user interface and excellent graphics, the new i70 instrument display from Raymarine offers 160° horizontal and vertical viewing angles to ensure the screen display can be seen clearly from all angles. An anti-reflective coating provides improved visibility in bright sunshine. The instrument has the ability to act as an AIS repeater, showing the 25 closest AIS transmitting vessels and enabling vessel information to be obtained from individually selected targets. i70's advanced LED backlighting offers low power consumption.



ELECTRIC ACTUATOR FIN STABILIZERS

► **Producer:** CMC Marine
► **Web address:** www.cmcmarine.com

CMC Marine has introduced two new electric actuator fin stabilisers for larger yachts. The Stabilis Electra 20BR and 22BR work with stabilizer fin sizes ranging from 1.6m-2.4m (5ft-8ft), making them suitable for yachts of more than 60m (197ft). Other benefits include high rotation speed — which greatly improves the stabilization anchor — a significant reduction in absorbed power, reduced noise and improved installation. Both new models join the recently introduced Stabilis Electra 16BR and 18BR.

