

# Super Yacht

i n d u s t r y

## *Twizzle*

ARRESTING DISPLAY

## *Refit & Repair*

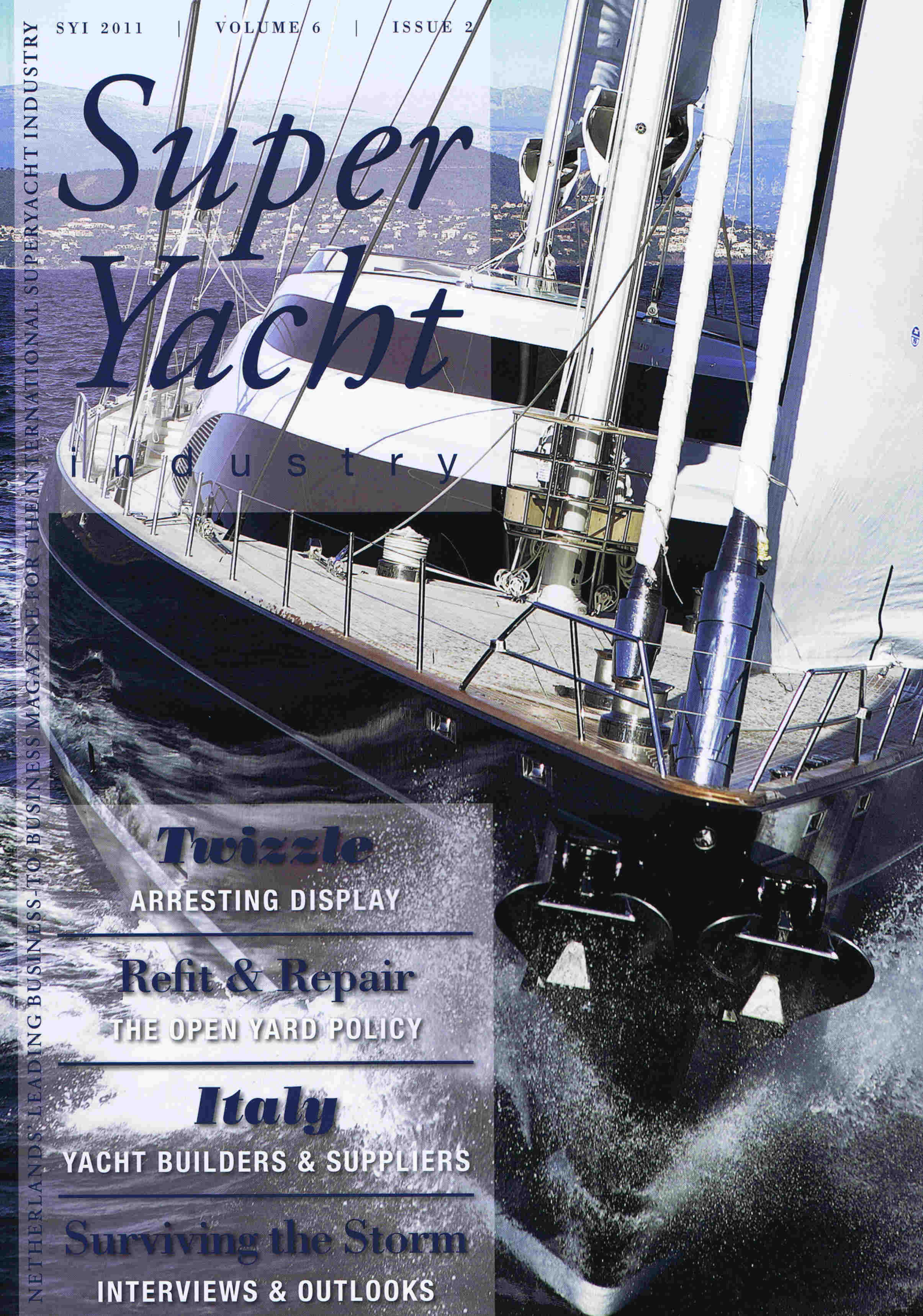
THE OPEN YARD POLICY

## *Italy*

YACHT BUILDERS & SUPPLIERS

## *Surviving the Storm*

INTERVIEWS & OUTLOOKS



# Outfitters Pages

## Keep it Cool

Webasto provides air-conditioning systems and recommends their BlueCool Premium model for larger boats with several cabins. As a rule, the air-conditioning unit is placed in the engine compartment. All cabins are cooled by means of a cooling water circuit that works on the basis of a water/glycol mix.



Webasto recently supplied Vicem Yacht with a BlueCool Premium (572,000 BTU) chiller, for their 46m yacht.

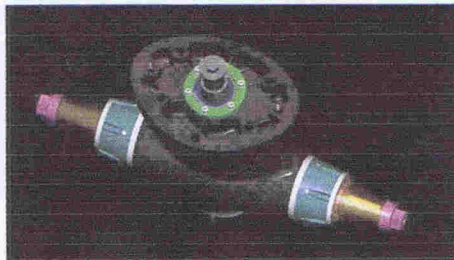
**i.** [www.webasto-marine.de](http://www.webasto-marine.de)

## Dualis Electric Thrusters

In the frame of the Seatec 2011 show last February, CMC presented four new thruster models in their Dualis series. All of them have counter-rotating propellers, and are designed for boats from 18 to 30 m. Models include the Dualis BTM 20, Dualis BTM 30, Dualis BTM 40 and Dualis BTM 50. In comparison to the previous models, the new series has a wide range of units with different power options.

Thanks to the special pod mounting block, each thruster can be coupled to both a hydraulic motor as well as an electric one.

**i.** [www.cmcmarine.com](http://www.cmcmarine.com)



## Composite Solution



Photo Credit André Minkema

SP-High Modulus offers boat builders a complete composite solution that combines SP-High Modulus' composite technologies and in-house engineering expertise. Their marine Corecell M-Foam has been developed to

deliver one foam product for all marine applications. It provides a combination of high strength, low weight and high elongation, low resin uptake for infusion processes and high-temperature stability for pre-preg processes in one cost-effective offering.

**i.** [www.gurit.com](http://www.gurit.com)

## Disappearing Doors



Already installed as standard outfit on numerous prestigious yachts the new transom doors designed and made by Besenzone, transform the cockpit and the salon into a single and well-lit open space by

disappearing into the floor when opened. While being closed, the doors allow for a subdivision of the spaces and a comfortable protection of the living area, without eliminating the pleasure of extensive sea views. The glass doors are mounted on an elegant and modern frame made of polished or powder-coated stainless steel.

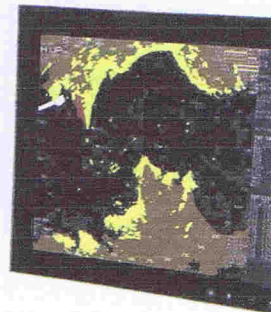
**i.** [www.besenzone.it](http://www.besenzone.it)

## Mix & Match

Aadaptiv Technologies' latest range of bridge monitors is technically perfected to suit the superyacht refit market, with regard to compatibility and price.

With their modular approach, as little or as much as desired can be upgraded, from a complete full-beam bridge console to smaller individual sections. The monitors are available in four different sizes to provide the best widescreen scale formatting and in a combination of daylight or sunlight displays, as well as with waterproof options.

**i.** [www.aadaptive.com](http://www.aadaptive.com)



## Picnic at Sea

Milan based Magboat has developed an optimised line of 9m Taxiboats and introduces a new model. The new Taxi Picnic models were developed and engineered in cooperation with the Italian H3O Studio, for a customer who wanted to make better use of spaces and seating, for day-outings on the sea. The yacht will be powered by a 225hp Volvo Penta D4 engine with an Aquamatic drive.

**i.** [www.magboat.com](http://www.magboat.com)

