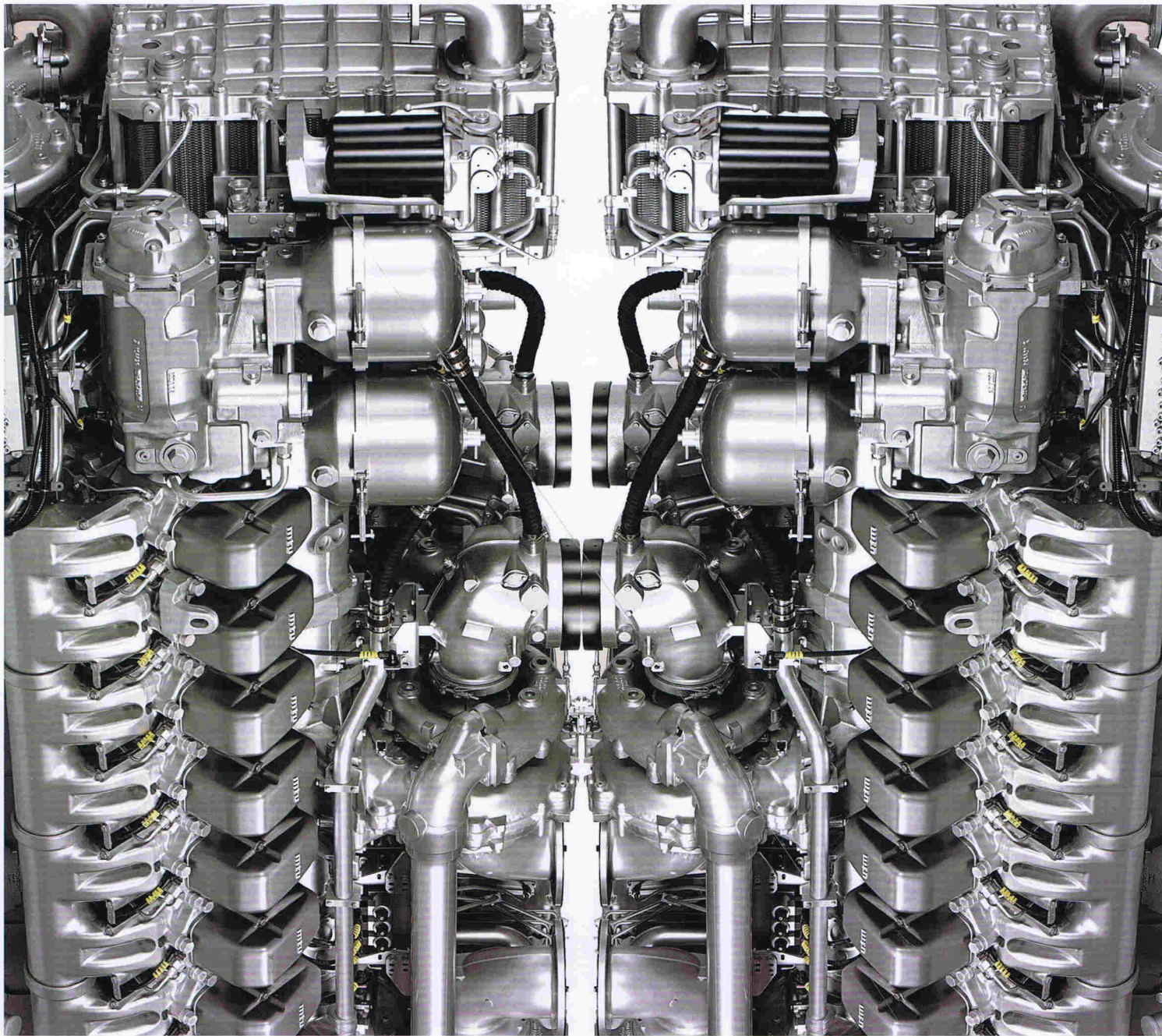


The Superyacht

TRUTH • OPINION KNOWLEDGE • IDEAS AND EXPERT INDUSTRY ANALYSIS



REPORT

ROSSI NAVI STEPS UP
One of the great sub-contracting yards in Viareggio steps into the limelight with a series of new builds.
Page 79

BATTLE OF THE BRANDS
We visit the two superpowers CAT & MTU to discuss their innovations and business strategies for the future.
Page 85

INNOVATION POWER
An in-depth look at two studies that quantify engine-room renewable-energy costs and savings.
Pages 103 & 109

FORMERLY
THE YACHT
The leading magazine for the design, construction, management, ownership & operation of luxury yachts
report

Technical News

FOCUS | MACHINERY

Leading developments in superyacht propulsion, power, HVAC and hotel systems. Visit www.synfo.com for the latest news and updates.

① CMC MARINE'S NEW RANGE OF THRUSTERS

CMC Marine presented four new thrusters at Seatec 2011: the Dualis BTM 20, Dualis BTM 30, Dualis BTM 40 and Dualis BTM 50. Similarly sized, they are replacing the 2009 models with the added feature of a range of units with different power – the lower power is at 18kW rather than 22kW and the higher is now 45kW rather than 37kW.

Special pod-mounting blocks allow the thrusters to be coupled with both hydraulic and electric motors and the pod's profile is designed to minimise hydrodynamic resistance.

The new series maintains

the previous model's features of tapered roller-bearings, triple seals on the propeller shaft, helicoidal gears, and nickel chromo-treated bushings.

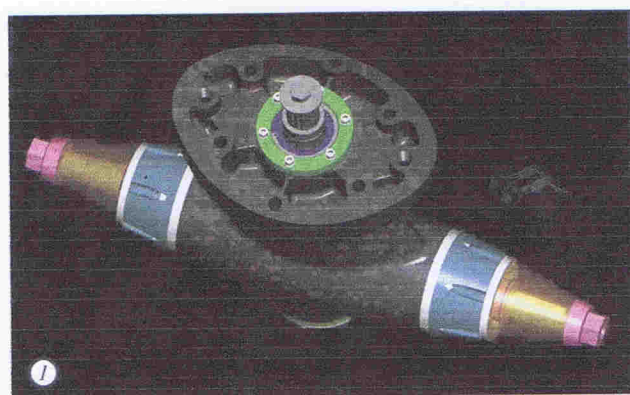
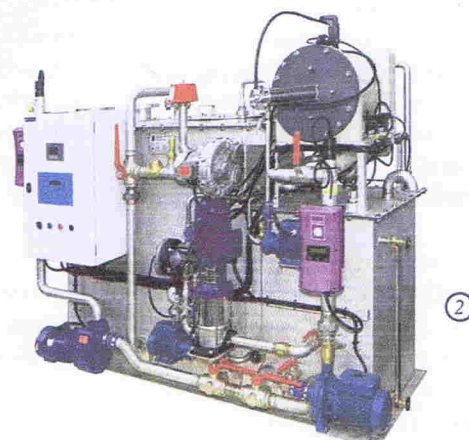
cmcmarine.com

② HOLLAND MARINE SERVICES AMSTERDAM DEVELOPS MSD-III

Holland Marine Services Amsterdam has developed the MSD-III in-line with IMO resolution 159(55).

They aim to ensure that this new waste-water treatment system is simple in operation, low in operational and maintenance costs, chemical-free and competitively priced.

The MSD-III is based on an



activated, fixed-film sludge design, disinfectant and post-filtration system, which has received a Lloyd's Type Approval for its recent Treatment Plant Design Parameters application. The MSD-III employs micro-organisms present in waste-water to absorb organic pollution. It degrades organic material in water, rather than separating it from water, a technique traditional systems employ. Conventional systems have the bacteria growing freely in the treated liquid, attaching to circulating sludge particles in the liquid. The MSD-III system though, is fitted with a contact material known as 'fixed media' (also called packing, biodeck

or biofilter), which is fully submerged in the liquid. This material has a large specific surface on which the active bacteria and sludge particles will easily attach and grow. This type of packing is used by many municipal waste-water plants around the world, mainly for upgrading existing extended aeration systems.

hmsa.nl

③ VOLVO PENTA EXPANDS ITS IPS PROGRAMME

Volvo Penta has embarked on the third stage of its Inboard Performance System (IPS) and can now offer IPS systems for vessels over 30m. In 2005,